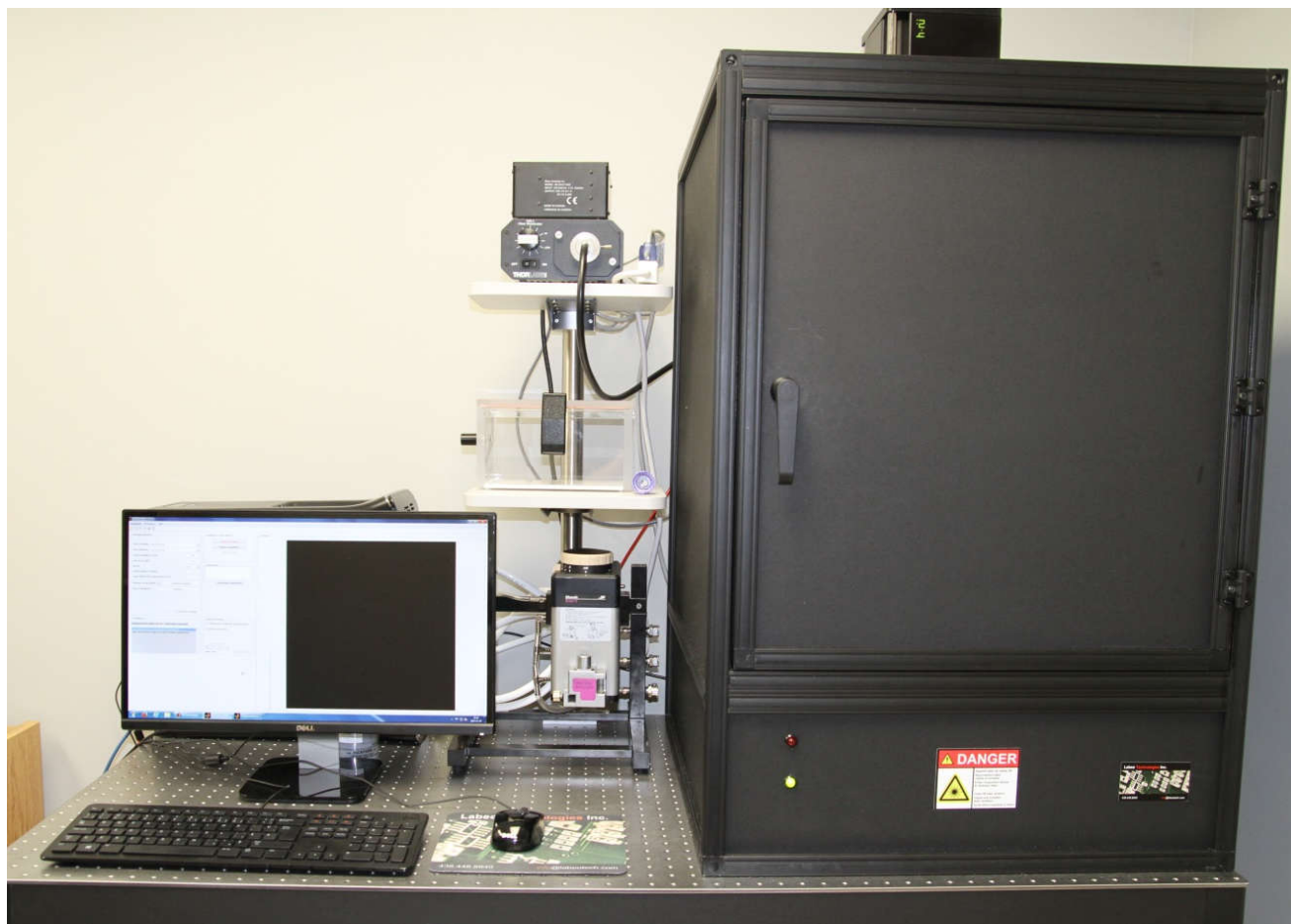


Bioluminescence, Epi-Fluorescence & Trans-Fluorescence Imaging System



Highest Sensitivity

One order of magnitude (10x) less noise than any other camera on the market (Nüvü Camēras).

Customizable Options

Select any excitation / emission filters.

3D Visualization

Trans-fluorescence enables depth reconstruction with far red and near infrared dyes.

Increased Performance-Price Ratio

Get more functionalities at a lower price.

442-3333 Ch Queen-Mary, Montreal (QC), H3V 1A2, Canada
Sales: +1 (438) 448-8840 info@labeotech.com
www.labeotech.com



LightTrack

Multimodality Imaging

Bioluminescence

High sensitivity EMCCD* sensor allows the best bioluminescence light collection.

Epi-Fluorescence

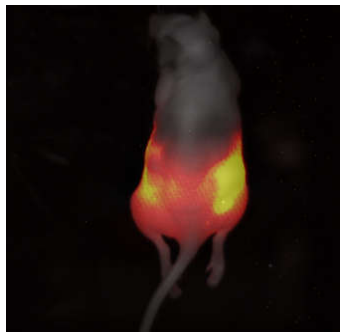
•Uniform illumination from filtered white light.

Trans-Fluorescence

- 2 laser diodes (660 nm & 780 nm) for far red and near infrared dyes.
- Laser scanning over the whole mice body or a selected region of interest.
- 3D visualization.

Image up to 3 mice simultaneously

Trans-Fluorescence Example Application



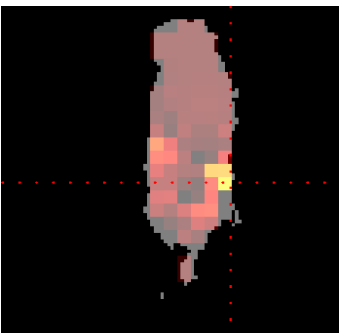
Transverse View



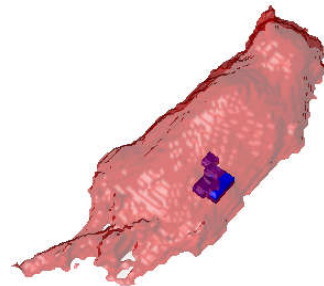
Sagittal View



Coronal View



3D View



*EMCCD: Electron Multiplying Charge-Coupled Device

Turnkey System Includes

Camera

- HNü EMCCD from Nüvü Camēras.
- One order of magnitude (10x) less noise than any other camera on the market.
- Resolution: 512 x 512 pixels.
- Field of view: 10 cm X 10 cm.
- EM gain range: 1 to 5000.
- Single photon detection probability: 91%.
- Cooling down to -85°C.

Excitation/Emission Filter Sets

- 4 filter sets included.
- Can handle up to 20 filter sets.

Computer

- Acquisition and analysis computer and software.

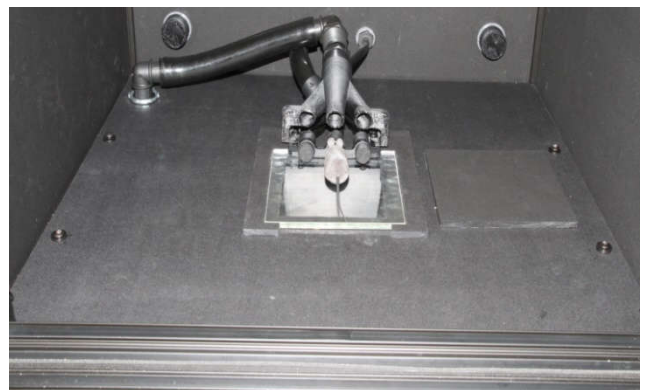
Anesthesia

- Anesthesia gas distribution for up to 3 mice.
- Induction chamber.

Hot Air Warming

- Hot air ventilation at 37°C.

Inside the Enclosure



442-3333 Ch Queen-Mary, Montreal (QC), H3V 1A2, Canada

Sales: +1 (438) 448-8840 info@labeotech.com

www.labeotech.com



LightTrack