

Modular Optical Imaging System

- Intrinsic Signal Optical Imaging (IOI)
- Fluorescence Imaging
- Laser Speckle Contrast Imaging (LCSI)

Applications:

Cerebral blood flow – Neurovascular coupling & functional connectivity studies
Neurological disorders – Pharmacology
Optogenetics – Voltage sensitive dyes (VSD)
Epilepsy – Alzheimer's disease
Aging – Hypertension – Ischemia



Integrated & Ergonomic

Save lab space and installation time.
Compatible with multiple applications.

Modular System

Select your LEDs and laser colors and the quantity of auxiliary inputs/outputs.

Better Results

Get better results in your study with reliable images.

Increased Performance-Price Ratio

Get more functionalities at a lower price.



442-3333 Ch Queen-Mary, Montreal (QC), H3V 1A2, Canada
Sales: +1 (438) 448-8840 info@labeotech.com
www.labeotech.com



Specifications

Articulated Illumination Arms

Illumination can easily be positioned at any angle with a flexible articulated arm

Optical Enclosure

For light sensitive applications, a 2' X 2' X 2' enclosure is available, with a curtain on the front and access holes on the back

Camera Positioning

Subject placed on a lab jack for precise focus adjustment

Focus and numerical aperture adjustment on the camera lens

Camera height and angular adjustments (left to right)

Dimensions

Mounted on a 1' X 1.5' optical breadboard

Imaging Options

Intrinsic signal Optical Imaging (IOI)

Red, amber and green illumination

Variable spot size from 3 mm to 30 mm

Fluorescence Imaging

Filtered LED illumination, filtered detection

Speckle Imaging

Laser diode with a variable spot size

Inputs/Outputs Options

Stimulation

BNC connectors

Digital coded or analog (1 or 2 channels)

Auxiliary Inputs

BNC connectors

4 to 8 Inputs, 10 kSamples/second

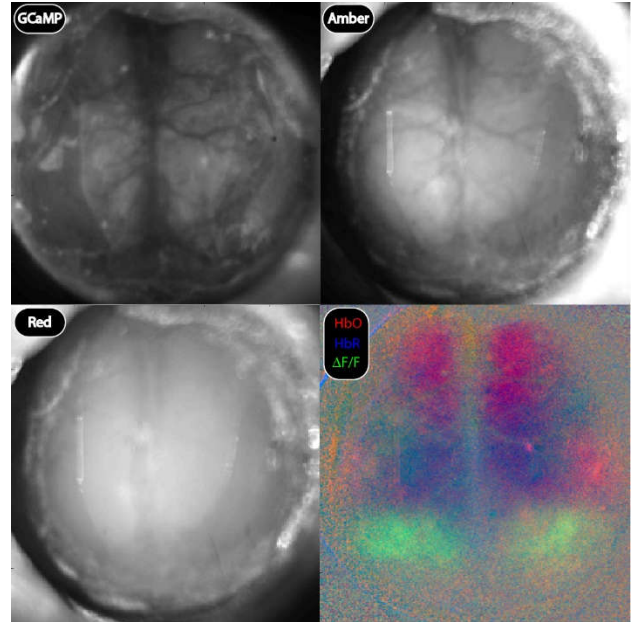
Software

Acquisition Parameters

Frame rate up to 480 Hz, exposure time from 0.01 ms, illumination selection, stimulation settings

Saving

Images, parameters & analog inputs saved on disk (SSD recommended for high frame rates)



Control Unit

Illumination Controls

Manual illumination intensity controls

Compact Size

9" X 8" X 3"



442-3333 Ch Queen-Mary, Montreal (QC), H3V 1A2, Canada

Sales: +1 (438) 448-8840 info@labeotech.com

www.labeotech.com



LightTrack